



WESTERN SYDNEY
UNIVERSITY

UNLIMITED

**OUR MISSION IS TO BE A UNIVERSITY OF INTERNATIONAL
STANDING AND OUTLOOK, ACHIEVING EXCELLENCE
THROUGH SCHOLARSHIP, TEACHING, LEARNING,
RESEARCH AND SERVICE TO LOCAL AND INTERNATIONAL
COMMUNITIES, BEGINNING WITH THE PEOPLE OF GREATER
WESTERN SYDNEY.**

Western Sydney University is a world-class university with international reach and a reputation for academic excellence and impact-driven research.

GLOBAL RANKINGS

TOP 2%

IN THE WORLD

TIMES HIGHER EDUCATION WORLD
UNIVERSITY RANKINGS 2019



**FOR TEACHING, EMPLOYABILITY,
INTERNATIONALISATION, FACILITIES,
INNOVATION AND INCLUSIVENESS**

QS STARS UNIVERSITY RATINGS 2019

SUBJECT RANKINGS

Arts and Humanities Top 250 (THE)	Education Top 100 (ARWU)
Agricultural Sciences and Forestry Top 75 (ARWU)	Electrical and Electronic Engineering Top 150 (ARWU)
Civil Engineering Top 75 (ARWU)	Nursing Top 100 (QS)
Communication and Media Studies Top 100 (QS)	Sociology Top 100 (QS)
Ecology Top 50 (ARWU)	Psychology Top 150 (QS)

ARWU: 2019 Academic Ranking of World Universities
QS: 2019 QS World University Rankings
THE: 2019 Times Higher Education World University Rankings

EMPLOYER SATISFACTION

#1 UNI

IN NSW FOR EMPLOYER SATISFACTION*

*QILT Employer Satisfaction Survey 2016 to 2018.

GRADUATE EMPLOYMENT

UNDERGRADUATE	POSTGRADUATE
81.5%	90.2%
EMPLOYMENT RATE*	EMPLOYMENT RATE*
\$58,400	\$71,400
MEDIAN SALARY	MEDIAN SALARY

*QILT The proportion of graduates who were employed four months after completing their course - qilt.edu.au 2019

UN SUSTAINABLE DEVELOPMENT GOALS

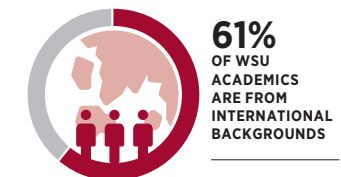
UNIVERSITY IMPACT RANKINGS*

- #1** in Australia overall
- #1** in the World for Gender Equality
- #2** in Australia for Reduced Inequalities

*Times Higher Education University Impact Rankings 2019

STAFF

GLOBAL PERSPECTIVE



Western Sydney University



KEY FOCUS AREAS

- A distinctively student-centred university
- A research-led university with regional, national and global impact
- A research-informed learning experience
- An expanding international reach and reputation
- An anchor institution and leading advocate and champion for Greater Western Sydney and its people
- A dynamic and innovative culture that secures success



SCHOOLS

- School of Health Sciences
- School of Medicine
- School of Nursing and Midwifery
- School of Psychology
- School of Business
- School of Education
- School of Humanities and Communication
- School of Law
- School of Social Sciences
- School of Built Environment
- School of Computer, Data and Mathematical Sciences
- School of Engineering
- School of Science
- Graduate Research School



STUDY AREAS

- Architecture
- Arts and Humanities
- Business
- Computing, Information and Communications Technology
- Construction Management
- Creative Industries
- Criminology and Policing
- Cyber Security and Behaviour
- Data Science
- Engineering
- Health and Sport Sciences
- Industrial Design
- Law
- Medicine
- Nursing and Midwifery
- Psychology
- Research Studies
- Sciences
- Social Sciences
- Teaching and Education
- TESOL, Interpreting and Translation
- Therapeutic Studies and Counselling
- Tourism and Urban Planning



EDUCATION PARTNERS

- Western Sydney University The College (English, Foundation Studies and Diploma Pathways)
- Western Sydney University International College (Foundation Studies and Diploma Pathways)
- Western Sydney University Sydney City campus (courses are delivered on behalf of Western Sydney University by Sydney Institute of Business and Technology (SIBT))

westernsydney.edu.au

WELCOME TO WESTERN SYDNEY UNIVERSITY

Western Sydney University is embarking on a large-scale transformative program that will bring the highest quality educational opportunities and research expertise to the world. Our vertical campuses in Western Sydney, the heart of Australia's fastest growing region, offer technology-rich teaching and research spaces, deliver enhanced student learning experiences, and provide links to businesses. As a world-class university, we are expanding international collaborations and strengthening our reputation for excellence.

I invite you to join the University's global knowledge network.

Professor Barney Glover AO FTSE FRSN MAICD
Vice-Chancellor and President

LAUNCH PAD

Technology Business Incubator

Western Sydney University Launch Pad is a one-stop-shop business and innovation support program that provides facilities, assistance and resources for start-ups and high growth technology-based businesses in Western Sydney. Entrepreneurs tap into the University's expertise to develop new solutions and business opportunities, and students tap into the accelerator to access mentoring, meeting spaces, events, networking and training.



Located in Western Sydney, one of the fastest growing regions in Australia, Western Sydney is home to a vibrant and diverse community of staff and students.

WE ARE WORLD-CLASS

Western Sydney University is a world-class university, ranked among the top two percent of universities in the world, with international reach and a reputation for academic excellence and impact-driven research.

21^C PROJECT

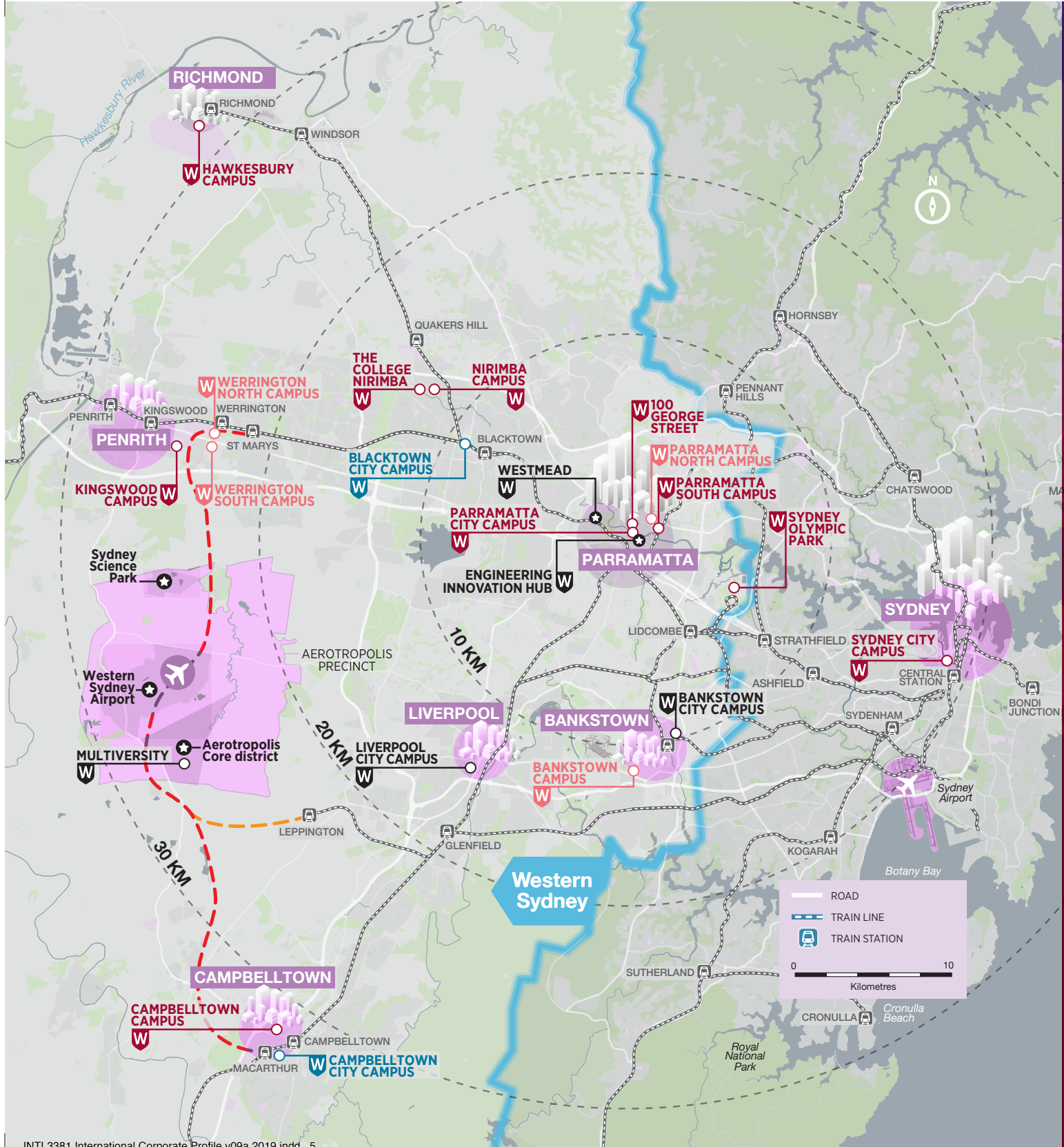
We are committed to the transformation of our curriculum to equip students for their success in a disrupted future.

The 21C project is extending our curriculum, growing a new teaching culture that sustains curriculum and teaching innovation and reflects our commitment as an anchor institution in our communities.

Our new degree structures enable our students to develop hybrid capabilities to complement discipline studies, equipping them as future thinkers, innovative entrepreneurs and sustainability advocates necessary for their successful engagement in the future of work and society.

LEARNING FACILITIES

- Anatomy laboratories
- Animal Science facilities - including the Reptile House and Small Marsupial House
- Collaborative learning spaces
- Computing laboratories
- Engineering precinct
- English Test Centre (IELTS and Pearson Testing)
- Group study rooms with screen sharing and video conferencing
- High-quality, modern, technology-rich and highly-flexible spaces
- Industrial Design Centre
- Interactive, technology-enabled learning studios
- Launch Pad - Technology Business Incubator
- Moot courts
- Nursing clinical practice units
- Purpose built production studio, design and creative arts facility
- Solar Car and Formula SAE Racing Car projects
- The UniClinic, a state-of-the-art clinical training facility for health science students



WESTERN SYDNEY REGION



3RD-LARGEST ECONOMY IN AUSTRALIA
 - \$145 BILLION* GROSS REGIONAL PRODUCT (GRP)
 - CONTINUES TO GROW AT MORE THAN 2% PER YEAR. PREDICTED TO RISE TO 4.6% IN FIVE YEARS



\$12 BILLION
 - ONCE-IN-A-LIFETIME INFRASTRUCTURE EXPANSION
 GOVERNMENT AND PRIVATE SECTOR INVESTMENT



ONE IN 10 AUSTRALIANS
 - LIVE IN WESTERN SYDNEY
2.5% POPULATION GROWTH RATE PER YEAR
 - TWICE THE STATE AVERAGE

170 COUNTRIES
 - RESIDENTS SPEAK MORE THAN 100 DIFFERENT LANGUAGES
 60% OF NEW IMMIGRANTS SETTLE IN WESTERN SYDNEY

TASMAN SEA

*Parramatta City Council Economy Profile economyprofile.com.au/parramatta/industries/gross-regional-product

*QILT - Quality Indicators for Learning and Teaching qilt.edu.au as at August 2018



OUR RESEARCH HAS GLOBAL IMPACT

We work with regional, national and international partners to deliver research outcomes that contribute to the economic, social and environmental wellbeing across communities and across the globe.

➤ **HIGHER DEGREES BY RESEARCH COMPLETED IN LAST 5 YEARS**

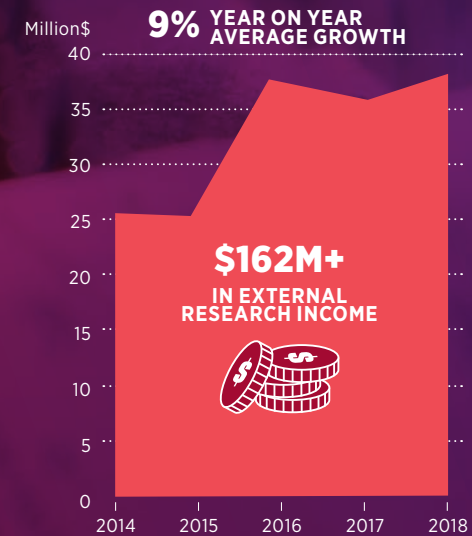


792
COMPLETED DEGREES
(2014-2018)

➤ **RESEARCH WITH IMPACT**



➤ **RESEARCH INCOME**



➤ **RESEARCH OUTPUT BY SUBJECT**

In the Nature Index (1 Nov 2017 – 31 Oct 2018)



Articles in the Nature Index may appear in more than one subject category

RESEARCH COLLABORATION

TOP 3

IN AUSTRALIA

80TH

IN THE WORLD

LEIDEN RANKINGS 2019

.....

EXCELLENCE IN RESEARCH FOR AUSTRALIA (ERA) NATIONAL REPORT

WELL ABOVE WORLD STANDARD

★★★★★

TWO-DIGIT FIELDS OF RESEARCH: Agricultural and Veterinary Sciences; Biological Sciences; and Environmental Sciences.

FOUR-DIGIT FIELDS OF RESEARCH: Complementary and Alternative Medicine; Cultural Studies; Ecology; Ecological Applications; Electrical and Electronic Engineering; Evolutionary Biology; Forestry Sciences; Microbiology; Nursing; Oncology and Carcinogenesis; Pharmacology and Pharmaceutical Sciences; Plant Biology; Soil Sciences; and Zoology.

ABOVE WORLD STANDARD

★★★★★

TWO-DIGIT FIELDS OF RESEARCH: Language, Communication and Culture; Mathematical Sciences; Medical and Health Sciences; and Psychology and Cognitive Sciences

FOUR-DIGIT FIELDS OF RESEARCH: Applied Mathematics; Biochemistry and Cell Biology; Communication and Media Studies; Environmental Science and Management; Human Geography; Human Movement and Sports Science; Linguistics; Macromolecular and Materials Chemistry; Materials Engineering; Performing Arts and Creative Writing; Psychology; Pure Mathematics; Sociology; and Statistics.

RESEARCH INSTITUTES

- Hawkesbury Institute for the Environment
- The MARCS Institute for Brain, Behaviour and Development
- Institute for Culture and Society
- NICM Health Research Institute
- Translational Health Research Institute
- Australia-China Institute for Arts and Culture

RESEARCH CENTRES

- Centre for Educational Research
- Centre for Infrastructure Engineering
- Centre for Research in Mathematics
- Global Centre for Land-Based Innovation
- National Vegetable Protected Cropping Centre
- Writing and Society Research Centre

RESEARCH GROUPS

- Digital Humanities Research Group
- Humanitarian and Development Research Initiative (HADRI)
- Molecular Medicine Research Group
- Nanoscale Organisation and Dynamics Research Group

STRATEGIC RESEARCH INITIATIVES

- The International Centre for Neuromorphic Engineering (ICNS)
- The Young and Resilient Research Centre (Y&RRC)
- Transforming Early Education and Child Health (TeACH)

LEADING RESEARCH FACILITIES

- Advanced Manufacturing and 3D Print Hub
- Advanced Materials and Characterisation facilities
- Biomedical Magnetic Resonance facility
- Confocal facilities
- Dedicated Crime Scene House
- Food Processing Pilot Plant
- Greenhouse Research Education Training facility
- National Imaging facilities
- Next Generation Gene Sequencing
- Mass Spectrometry facilities
- Mechatronics and Robotics facility
- Psychology clinics and laboratories
- Secondary Ion Mass Spectrometer
- Six Star Green Star Science and Psychology facility
- Structural Engineering Lab – one of the most advanced structural labs in Australia
- Additional complementary facilities – through our relationships with other universities, hospitals, clinics and research institutions

REDI

The Research Engagement, Development and Innovation (REDI) Business Team connects business, government and the community with Western Sydney University by establishing external linkages and identifying partnership opportunities for commercial research, professional consultancy, commercialisation opportunities, access to intellectual property and expertise, and to the University's cutting-edge research facilities.

westernsydney.edu.au/redi





OUR KEY RESEARCH THEMES

EDUCATION AND WORK: ACCESS, EQUITY AND PATHWAYS

Western's Education and Work theme draws on the population diversity of Western Sydney to underpin research that explores educational access on a global scale.

Our research is concerned with the potential for education to transform the way people live and learn. Research in this theme draws together researchers from across our schools and institutes who boast a long history of engagement with educational institutions and schools across Western Sydney and beyond.



MAKING THE CLASSROOM A LEVEL PLAYING FIELD

Our education experts developed new approaches to early childhood education in underprivileged communities in Chile and Australia. Researchers advised Chilean government education policy, and, in Australia, a teacher mentoring program showed significant advances in child learning.

ENVIRONMENT AND SUSTAINABILITY: CLIMATE, AGRICULTURE AND LIVABILITY

Western's campuses are living labs for innovation and collaboration through local, national and global research partnerships.

A unique perspective on the interdependence of urban and agricultural systems, our research extends beyond the region and is oriented to finding novel responses to the grand challenges and impacts of global environmental change.

Research within our Environment and Sustainability theme is wide ranging, applied and interdisciplinary, and concentrates on sustaining and managing diverse urban, agricultural and natural systems.



'STRESS TESTING' PASTURE PLANT SPECIES TO HELP SAFEGUARD AUSTRALIA'S LIVESTOCK AND DAIRY INDUSTRIES

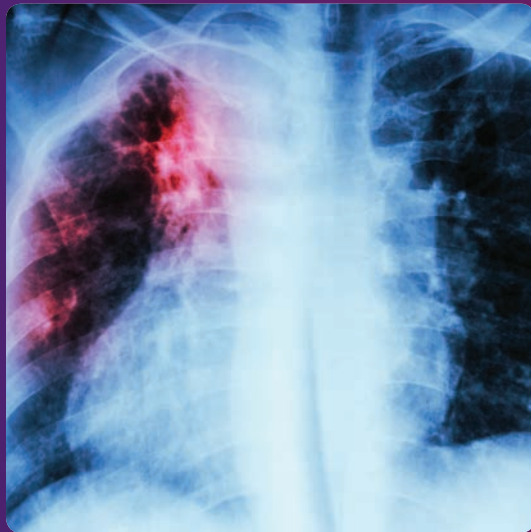
Extreme weather could become the new normal for pastoral conditions within the next 30 years. Exposing experimental planning areas to predicted climate conditions such as drought and warming, we are able to 'stress test' pasture species and plan for a sustainable future.

HEALTH & WELLBEING: TRANSLATION, INTEGRATION AND INNOVATION

Research within the Health and Wellbeing theme explores how health initiatives can prevent disease and illness, encourage healthy lifestyles in individuals and communities, and reduce the cost and impact of illness.

The environments in which we live, the cultural background from which we come, and the work we do all affect our physical and mental wellbeing.

One in four children are overweight or obese. While the amount of Australians smoking has halved since 1991, 12.8% of Australians still smoke. Almost one in five people consume alcohol in such a way that it puts them at risk of an alcohol-related disease or injury. Health and wellbeing are linked. Western's effective, research-led interventions focus on the complex factors contributing to health outcomes.



TUBERCULOSIS MODELLERS SAVING LIVES

Tuberculosis (TB) is one of the top 10 killers globally. A supercomputer experiment involving Western Sydney University scientists and using advances in maths and genomics, modelled antibiotic-resistant tuberculosis transmission to help save lives.

URBAN LIVING FUTURES AND SOCIETY: PEOPLE, CULTURE, ECONOMY AND THE BUILT ENVIRONMENT

Research within Western's Urban Living Futures and Society theme examines the complex cultural, social, economic, psychological and environmental forces that are shaping our cities and their liveability.

This research considers social relationships, digital disruption, infrastructure development and changes to the built environment through the lens of urban living to understand the connections between key fields such as health, economics, culture, engineering and technology.

The theme works between different research concentrations spread across the University. The Institute for Culture and Society provides leadership in researching digital cities, equitable economies, mental and cultural diversity. A range of research centres and schools house researchers working in fields such as public health, creative industries, property development, transport, smart construction, architectural design, geography and urban planning.



NEW ROADS TO SUSTAINABLE CONSTRUCTION

When most people think of polymers, carbon-based materials come to mind. But research at Western's Centre for Infrastructure Engineering has recently begun to investigate the potential of other types of polymers for application in cement-free environmentally friendly concrete. The alternative? A water-based, environmentally friendly polymer spray that forms a durable film that traps the dust.



FROM WESTERN

TO THE WORLD

GLOBAL KNOWLEDGE NETWORK

Our global network includes partnerships with overseas universities and key government agencies, collaborations in research, articulation pathways and engagement with global industry.

INTERNATIONAL ENGAGEMENT

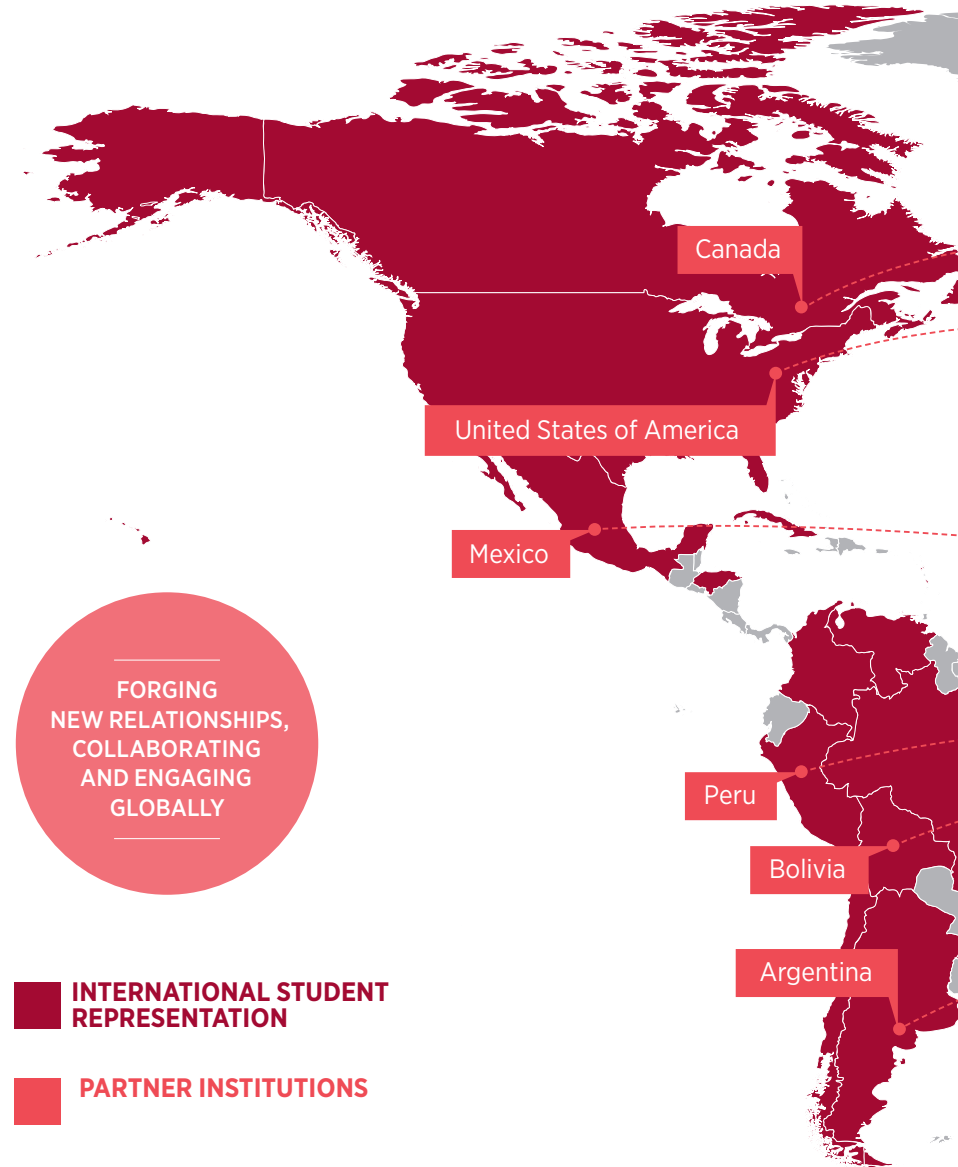
Western Sydney University supports a wide network of strategic relationships and collaborations to advance research, teaching and innovation.

The University also offers tailored short capacity building programs which provide professionals, government personnel, teaching staff and students with an unrivalled experience of the University's academic, social and cultural offerings.

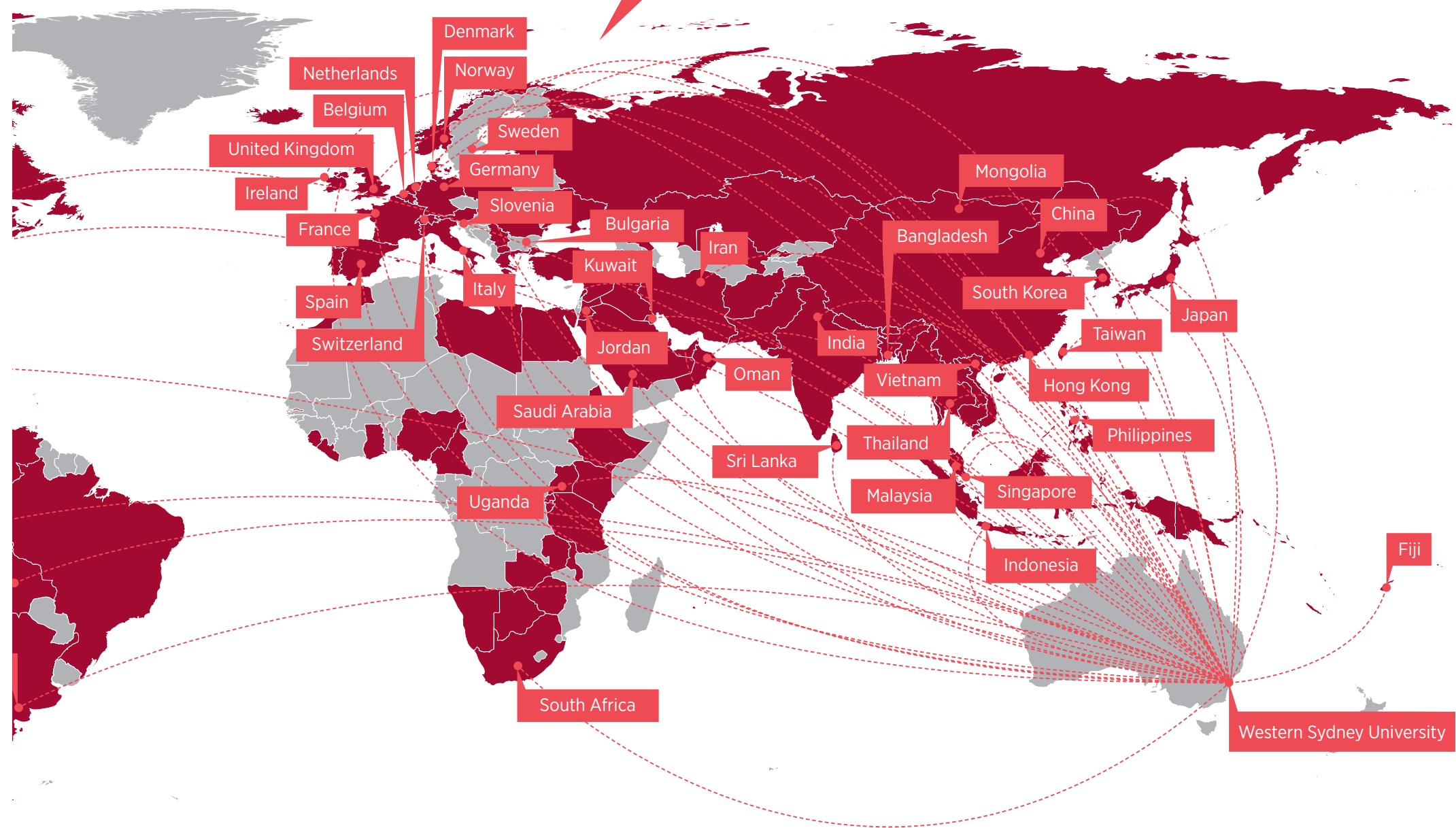
These have included delivery of capacity building and professional development programs to Bangladeshi judicial staff, Indonesian academics and professional staff, Chinese teaching staff, as well as a variety of programs for students from America, Taiwan, Vietnam, Japan and India.

The University also supports commercial initiatives and provides continuing and professional education opportunities.

westernsydney.edu.au/international/partnerships



Over 150 international partners
in 43 Countries



WESTERN SYDNEY UNIVERSITY

+61 2 9852 5222

westernsydney.edu.au

UNDERGRADUATE AND POSTGRADUATE

Course enquiries: internationalstudy@westernsydney.edu.au

Application enquiries: apply@westernsydney.edu.au

+61 2 9852 5499

RESEARCH

grsenquiries@westernsydney.edu.au

westernsydney.edu.au/research

PATHWAYS

westernsydney.edu.au/thecollege

INTERNATIONAL PARTNERSHIPS

westernsydney.edu.au/international

CRICOS CODE 00917K



WESTERNSYDNEY.EDU.AU